

CAIVAN

FOX RUN

SERIES II / PLAN 1 FLOOR PLANS

WELCOME HOME

This lovely detached home boasts a double garage, rear yard space and premium exterior finishes. The generous open plan living space is flooded with light and features an eat-in area in the kitchen as well as a formal dining space. Upstairs, this design includes a stunning open plan loft and primary suite with an oversized walk-in closet.

INFO

Square Feet	2,678*
Bedrooms	Up to 5
Bathrooms	Up to 3.5
Parking	4

*Square Feet includes 686 Sq. Ft. Finished Basement

ELEVATION A



ELEVATION B

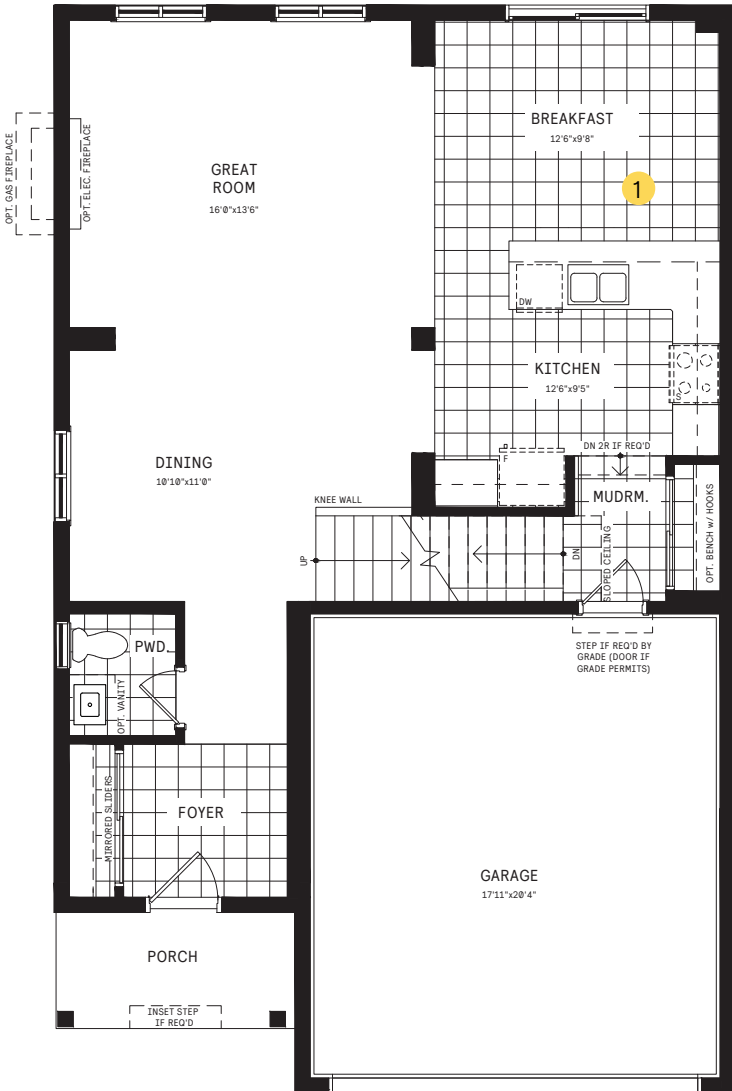


ELEVATION C

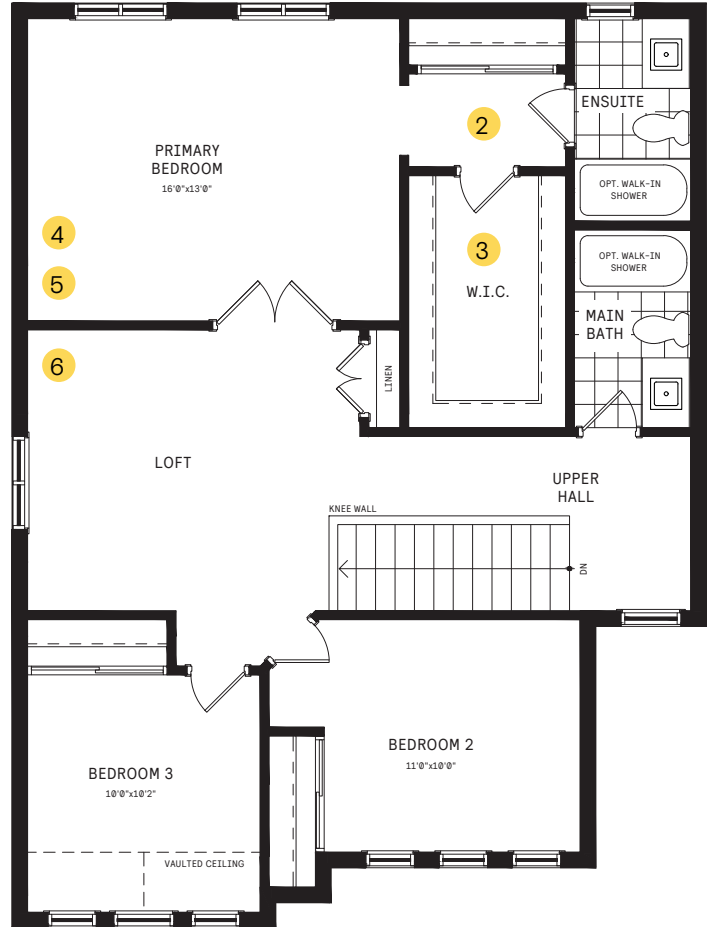


FOX RUN SERIES II / PLAN 1 FLOOR PLANS

MAIN FLOOR



2ND FLOOR



MAIN FLOOR DESIGNER CHOICE OPTIONS →

1 Chef Center

2ND FLOOR DESIGNER CHOICE OPTIONS →

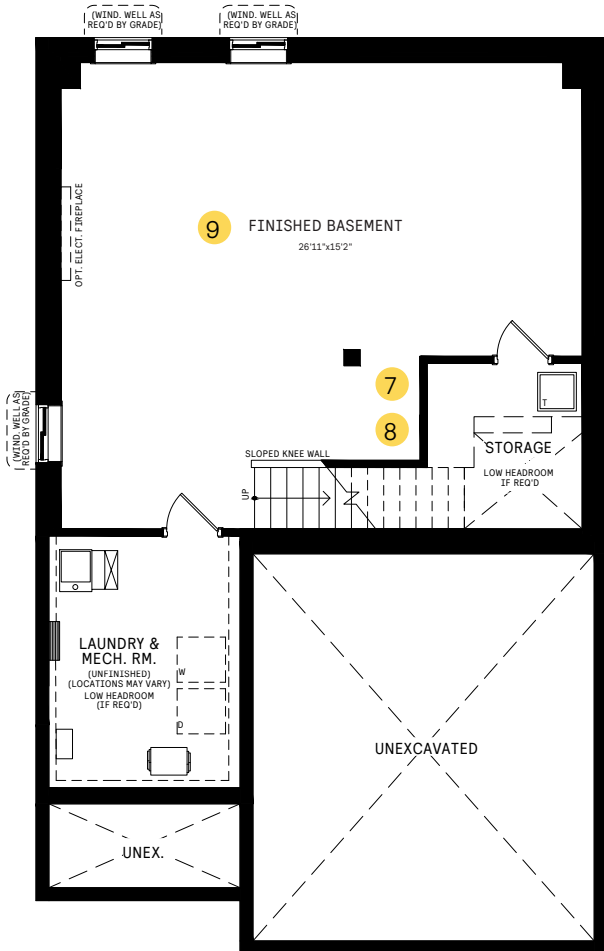
- 2 Spa Ensuite
- 3 2nd Floor Laundry
- 4 Primary Retreat
- 5 Primary Retreat w/
2nd Floor Laundry
- 6 4 Bedroom Plan

FOX RUN

SERIES II / PLAN 1

FLOOR PLANS

BASEMENT



BASEMENT DESIGNER CHOICE OPTIONS →

- 7 Finished Basement Powder Room
- 8 Finished Basement Bathroom
- 9 Finished Basement Package

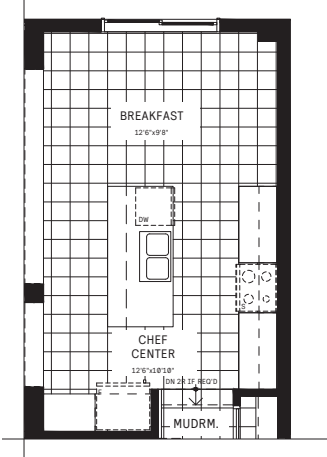
All Square Footages are based on "A" Elevation floor plans and include Finished Basement area. Despite the best efforts of Caivan and its affiliates, officers, directors, employees or agents (collectively "we", "us" or "our" as circumstances warrant) to provide accurate information, including but not limited to prices and availability of homes or lots, it is regrettably not possible to ensure that all information contained in this display is correct. We do not warrant the accuracy and completeness of information, text, graphics or items contained in this display. All dimensions provided are approximate and sizes and specifications are subject to change without notice. Artist's concepts only. Actual usable floor space varies from indicated floor areas. Square footages include finished space in the basement. E. & O.E. February 2024. THIS DISPLAY IS PROVIDED 'AS IS' WITHOUT WARRANTY OF ANY KIND, EITHER EXPRESS OR IMPLIED, WARRANTIES OF MERCHANTABILITY, FITNESS FOR A PARTICULAR PURPOSE, OR NON-INFRINGEMENT. The information and specifications contained in this brochure are subject to change without notice and represent no commitment on our part in the future. All products and services are provided subject to applicable taxes and accompanying terms and conditions.

FOX RUN

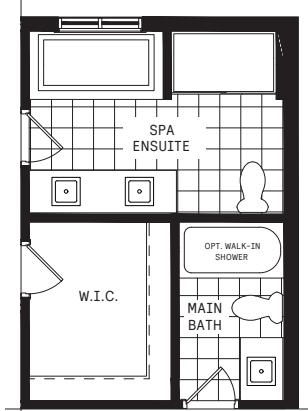
SERIES II / PLAN 1

DESIGNER CHOICE OPTIONS

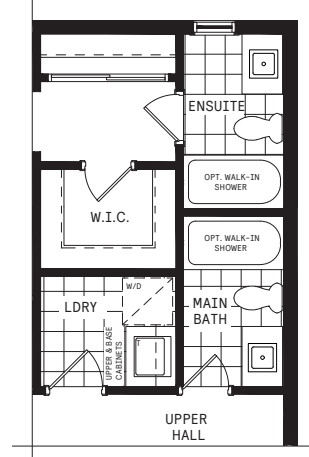
1 Chef Center



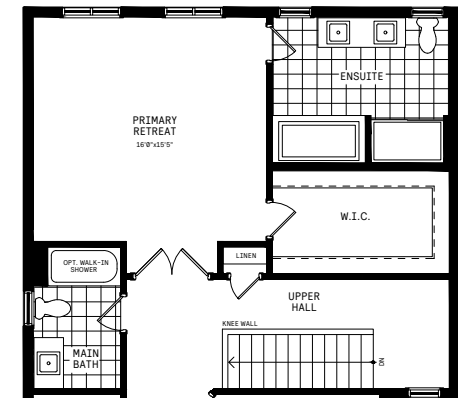
2 Spa Ensuite



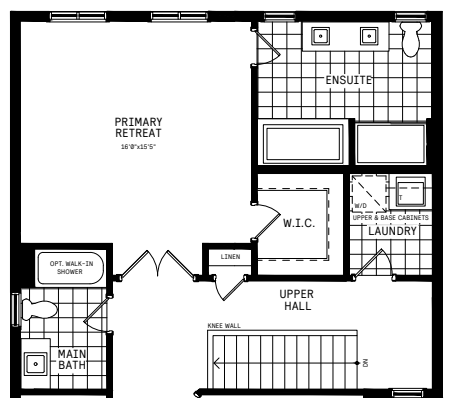
3 2nd Floor Laundry



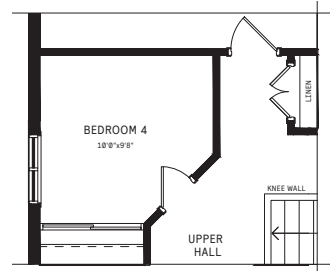
4 Primary Retreat



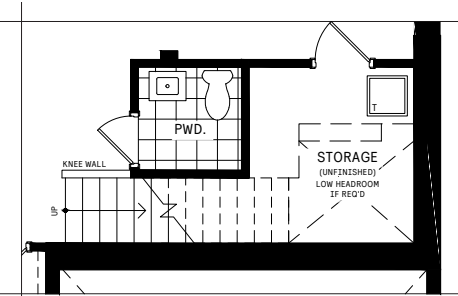
5 Primary Retreat w/ Second Floor Laundry



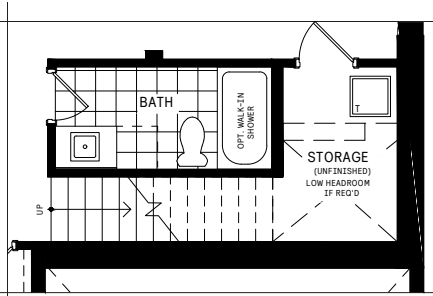
6 4 Bedroom Plan



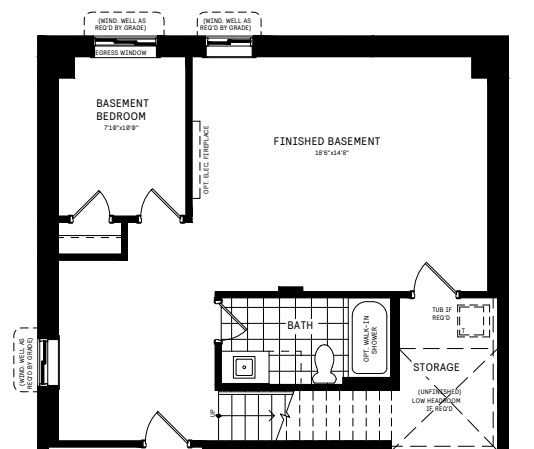
6 Finished Basement Powder Room



8 Finished Basement Bathroom



9 Finished Basement Package



All Square Footages are based on "A" Elevation floor plans and include Finished Basement area. Despite the best efforts of Caivan and its affiliates, officers, directors, employees or agents (collectively "we", "us" or "our" as circumstances warrant) to provide accurate information, including but not limited to prices and availability of homes or lots, it is regrettably not possible to ensure that all information contained in this display is correct. We do not warrant the accuracy and completeness of information, text, graphics or items contained in this display. All dimensions provided are approximate and sizes and specifications are subject to change without notice. Artist's concepts only. Actual usable floor space varies from indicated floor areas. Square footages include finished space in the basement. E. & O.E. February 2024. THIS DISPLAY IS PROVIDED 'AS IS' WITHOUT WARRANTY OF ANY KIND, EITHER EXPRESS OR IMPLIED, WARRANTIES OF MERCHANTABILITY, FITNESS FOR A PARTICULAR PURPOSE, OR NON-INFRINGEMENT. The information and specifications contained in this brochure are subject to change without notice and represent no commitment on our part in the future. All products and services are provided subject to applicable taxes and accompanying terms and conditions.